

Personal Communications install/setup instructions.

When the cd is placed in the cd and autorun is activated on cd player this is the first screen that appears.

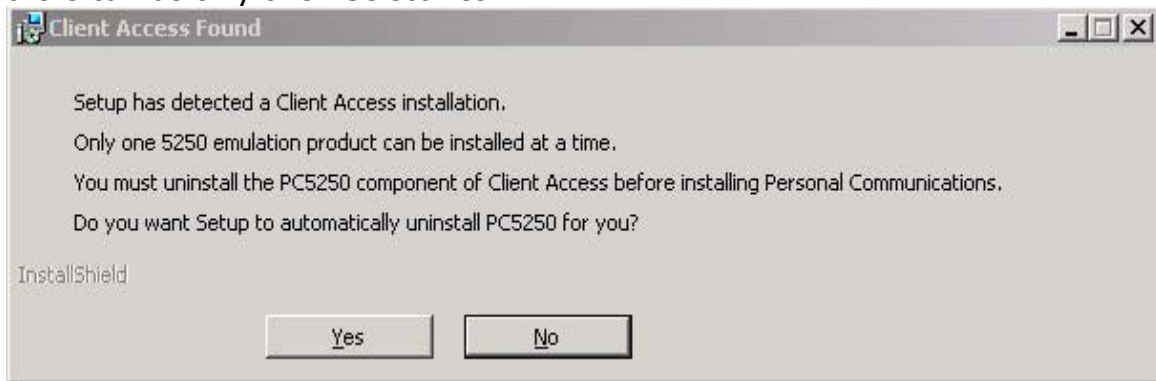
What we want to do at this point is click on install product.



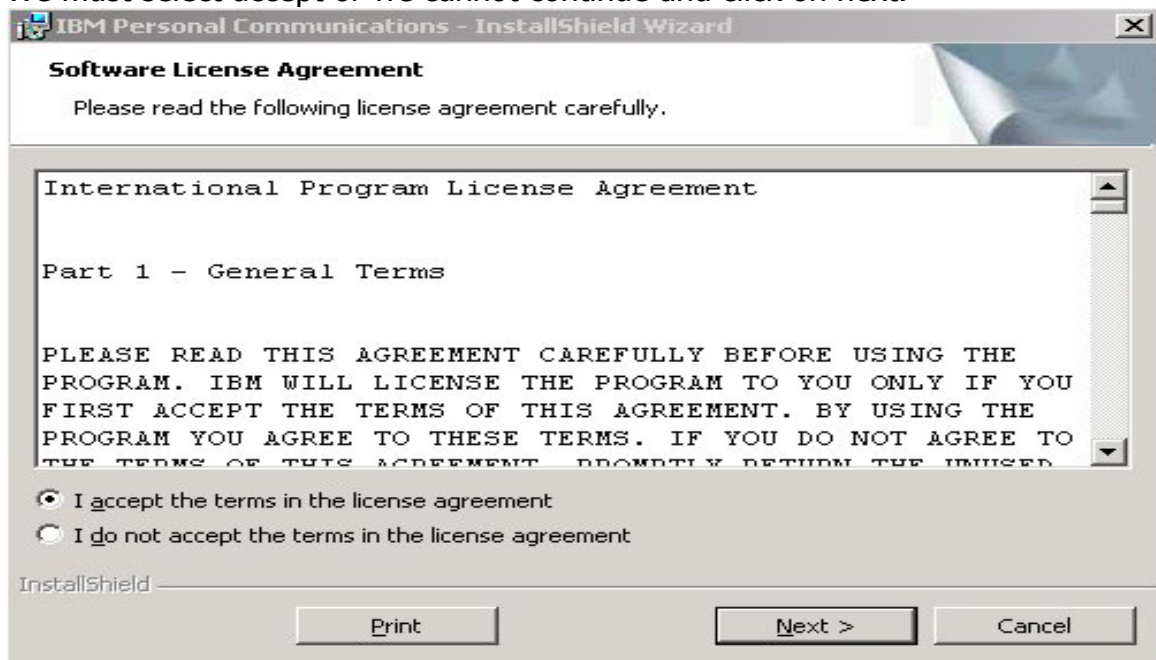
The install wizard will then start and provide the welcome to install wizard screen. Here we want to click on next.



If client express has already been installed this message will appear. AS it says there can be only one. Select Yes.



We must select accept or we cannot continue and click on next.



Enter the customer's information and ensure anyone who uses this computer is selected, and then click on next.

Customer Information
Please enter your information.

User Name:
Greg Davis

Organization:
IBM

Install this application for:

- Anyone who uses this computer (all users)
- Only for me (Greg Davis)

InstallShield

Next > Cancel

Easiest to simply check typical and click on next

Setup Type
Choose the setup type that best suits your needs.

Please select a setup type.

- Typical**
Only the typical program features will be installed.
- Custom**
Choose which program features you want installed and where they will be installed. Recommended for advanced users.

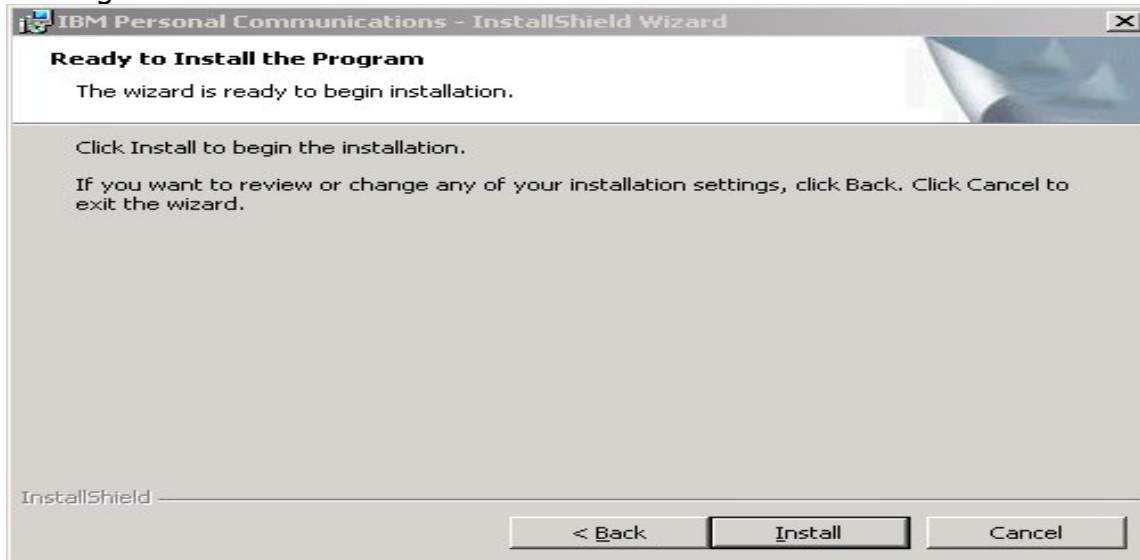
InstallShield

< Back Next > Cancel

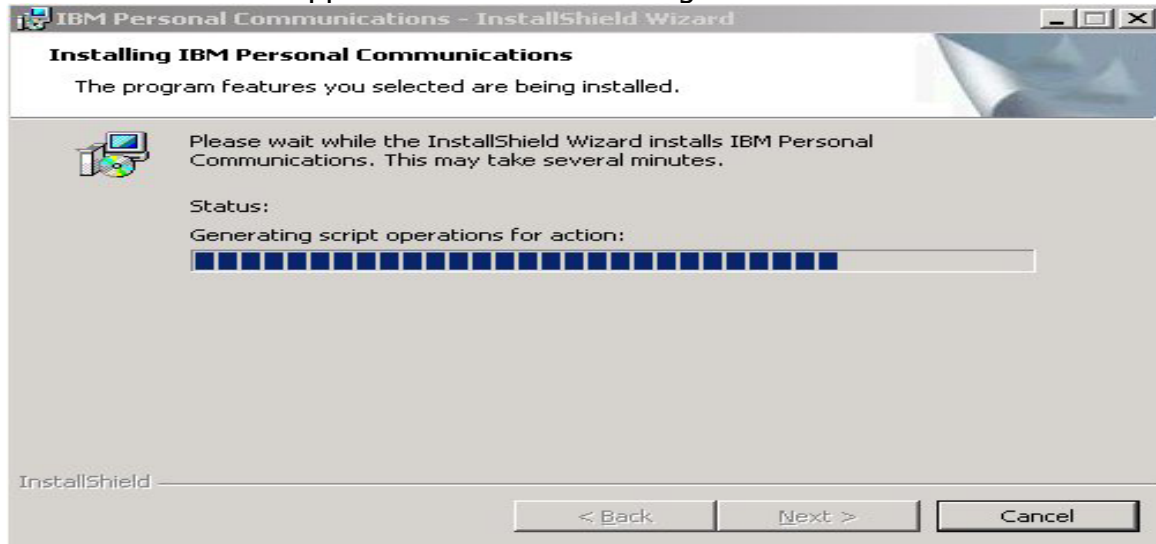
Change this to All users as indicated then select next.



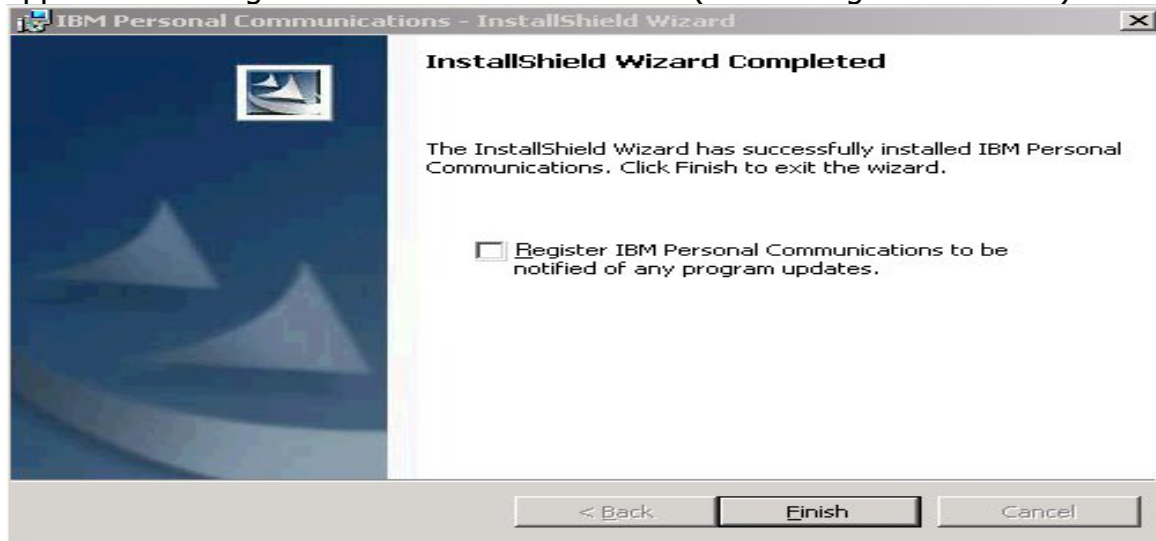
Now all choices have been made prior to install select Install and the installation will begin.



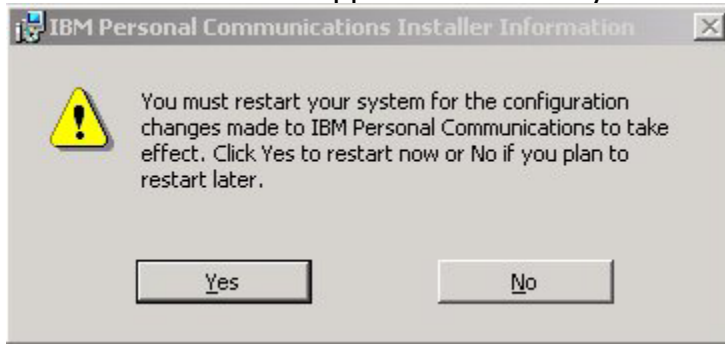
Several screens will appear such as the following while installation continues.



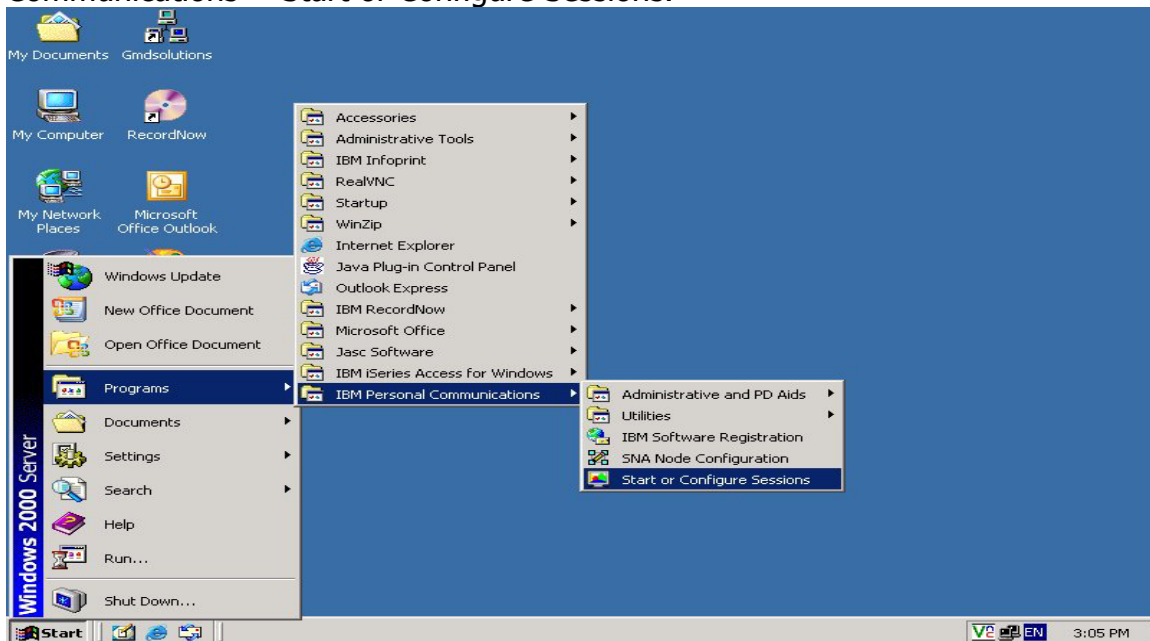
Once Personal Communications has been installed the install wizard screen appears indicating it is finished. Click on Finish. (Do not Register with IBM)



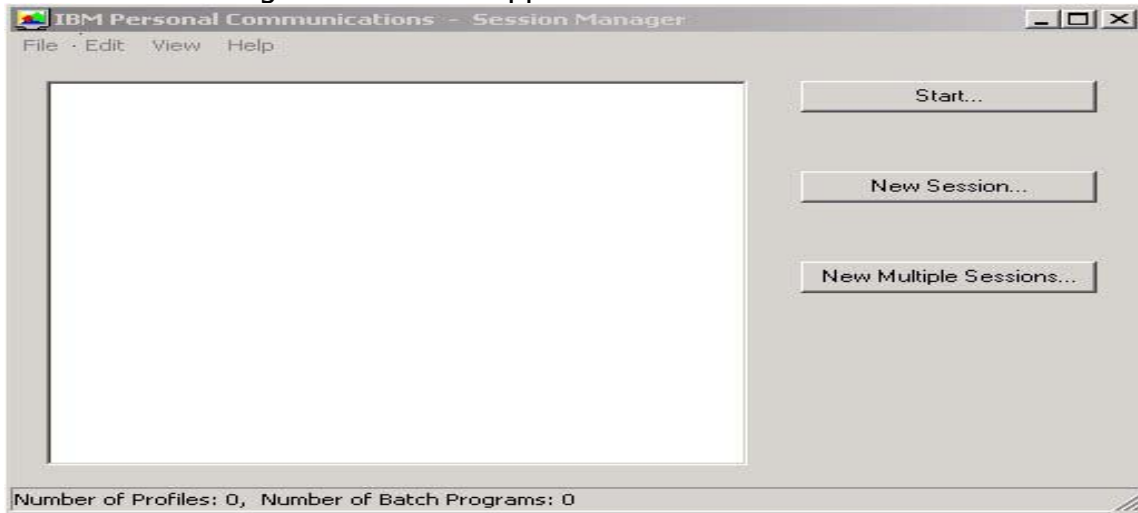
Then the next screen appears and select yes to restart system.



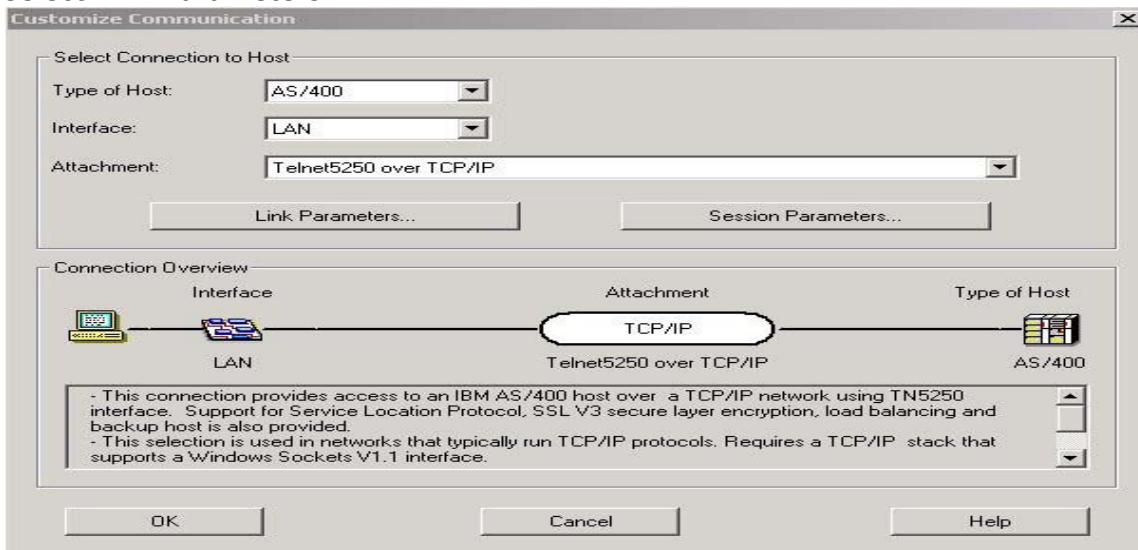
Once system is back up click on start > programs > IBM Personal Communications > Start or Configure Sessions.



The Session Manager screen then appears. Click on New Session.



When Configuring for an AS400 connection ensure type of host is AS/400, then select Link Parameters.



Under link parameters type in iSeries server name, click on apply and then OK.

The screenshot shows the 'Telnet5250' dialog box with the 'Advanced Security Setup' tab selected. It features a table for host definitions and two checkboxes for security options.

| | Host Name or IP Address | LU or Pool Name | Port Number |
|----------|-------------------------|-----------------|-------------|
| Primary | qcounty | | 23 |
| Backup 1 | | | 23 |
| Backup 2 | | | 23 |

Auto-reconnect
 Enable Security

Buttons: OK, Cancel, Apply, Help

Next click on Session parameters.

The screenshot shows the 'Customize Communication' dialog box. It includes dropdown menus for host type, interface, and attachment, along with buttons for link and session parameters, a connection overview diagram, and a text box with technical details.

Select Connection to Host

Type of Host: AS/400
Interface: LAN
Attachment: Telnet5250 over TCP/IP

Buttons: Link Parameters..., Session Parameters...

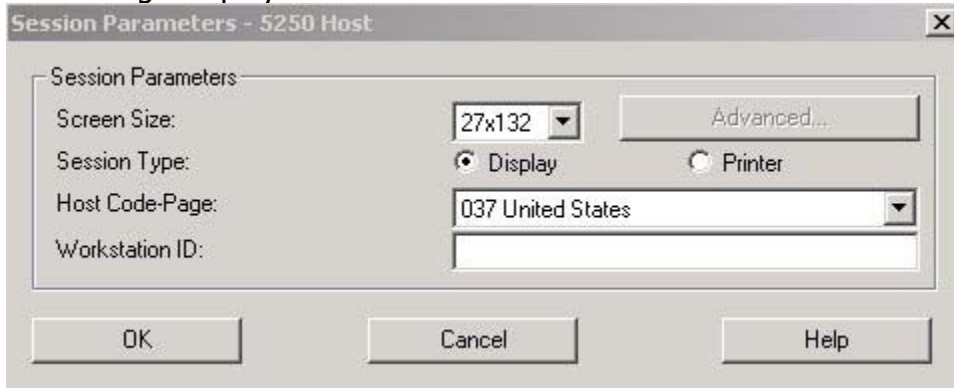
Connection Overview

Interface: LAN
Attachment: TCP/IP (Telnet5250 over TCP/IP)
Type of Host: AS/400

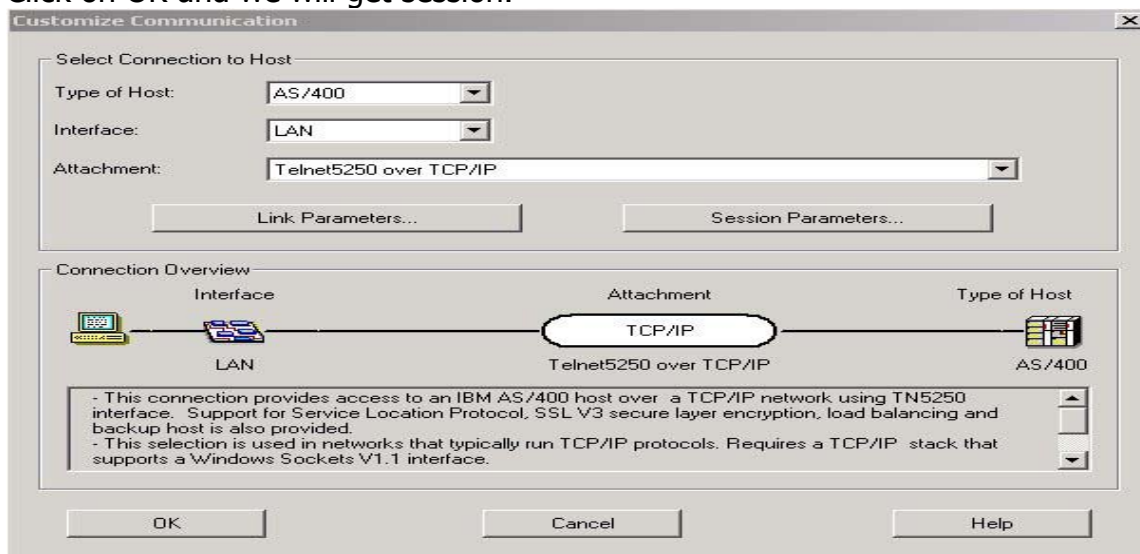
- This connection provides access to an IBM AS/400 host over a TCP/IP network using TN5250 interface. Support for Service Location Protocol, SSL V3 secure layer encryption, load balancing and backup host is also provided.
- This selection is used in networks that typically run TCP/IP protocols. Requires a TCP/IP stack that supports a Windows Sockets V1.1 interface.

Buttons: OK, Cancel, Help

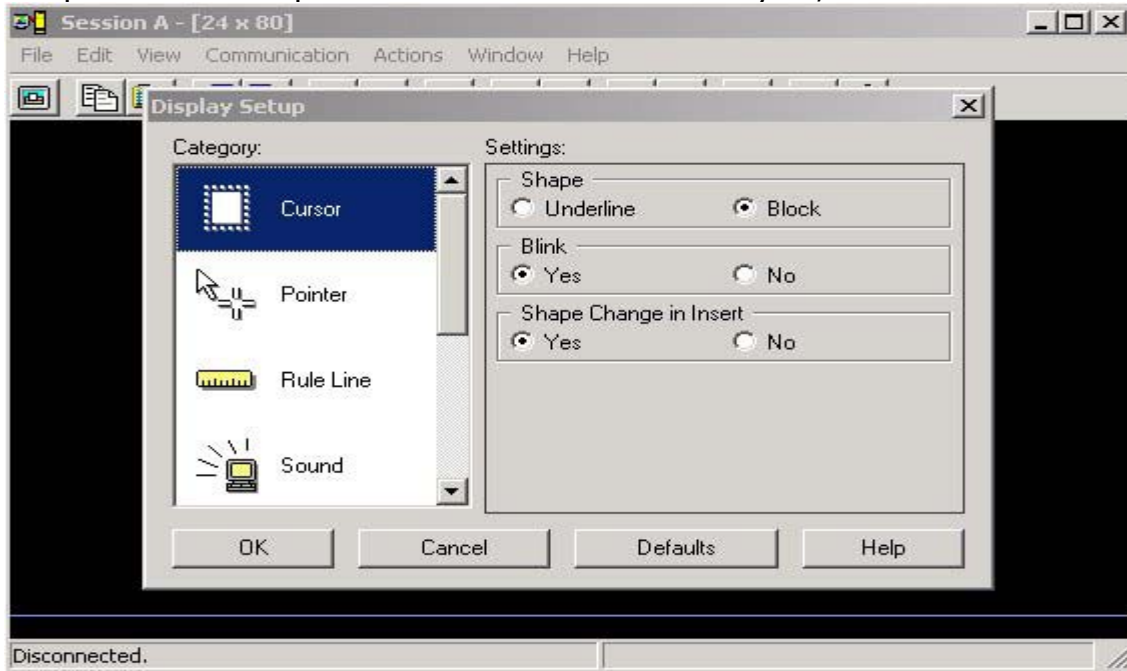
The change display size to 27x132 click on OK



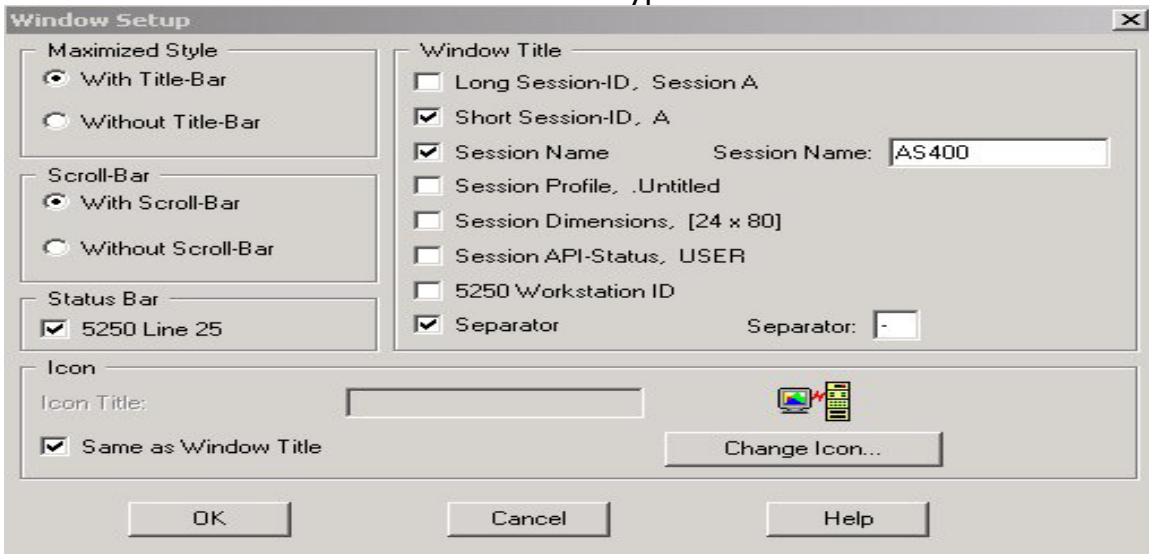
Click on OK and we will get session.



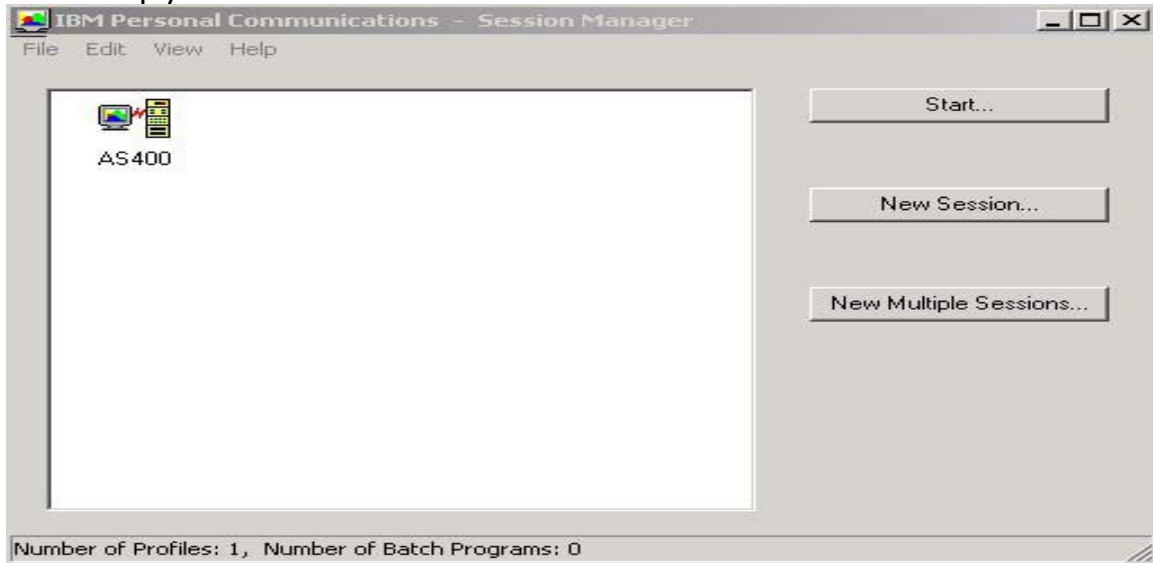
Once back to session screen select edit > preferences > appearance > display setup and under shape select "block" and also Blink "yes", click on OK.



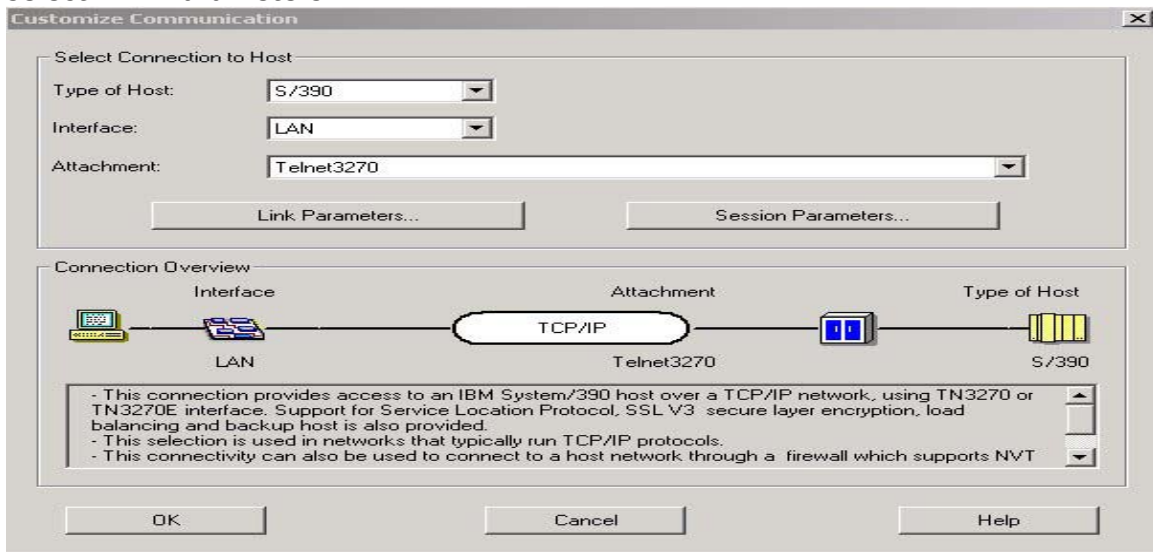
Then select edit > preferences > appearance > window setup and make sure only boxes I have checked are checked and fill in session name as AS400. Click on OK. Once you have clicked on OK you will be taken back to the session screen. Then click on file > save as > and type in AS400 for session name.



If we look at IBM Personal Communications – Session manager screen we see where the session has been saved as AS400. If you want to create a session for IDOT simply click on new session.



The customize communication screen appears. This time leave it a S/390 and select Link Parameters.



Under link parameters type in this ip address. It is the same for all IDOT connections that we will be setting up. Then click on apply and OK.

Telnet3270

Host Definition | Automatic Host Location | Advanced Security Setup

| | Host Name or IP Address | LU or Pool Name | Port Number |
|----------|-------------------------|-----------------|-------------|
| Primary | 165.206.195.10 | | 23 |
| Backup 1 | | | 23 |
| Backup 2 | | | 23 |

Printer Association (only valid for TN3270E Display sessions)

Associated Printer Session: Browse...

Start Associated Printer Minimized

Automatically close the associated printer session with this session

Auto-reconnect

Enable Security

OK Cancel Apply Help

If you are setting a session up for VOTER in auditor office you need to enter in the name voter under LU or Pool Name. Otherwise same as for IDOT.

Telnet3270

Host Definition | Automatic Host Location | Advanced Security Setup

| | Host Name or IP Address | LU or Pool Name | Port Number |
|----------|-------------------------|-----------------|-------------|
| Primary | 165.206.195.10 | voter | 23 |
| Backup 1 | | | 23 |
| Backup 2 | | | 23 |

Printer Association (only valid for TN3270E Display sessions)

Associated Printer Session: Browse...

Start Associated Printer Minimized

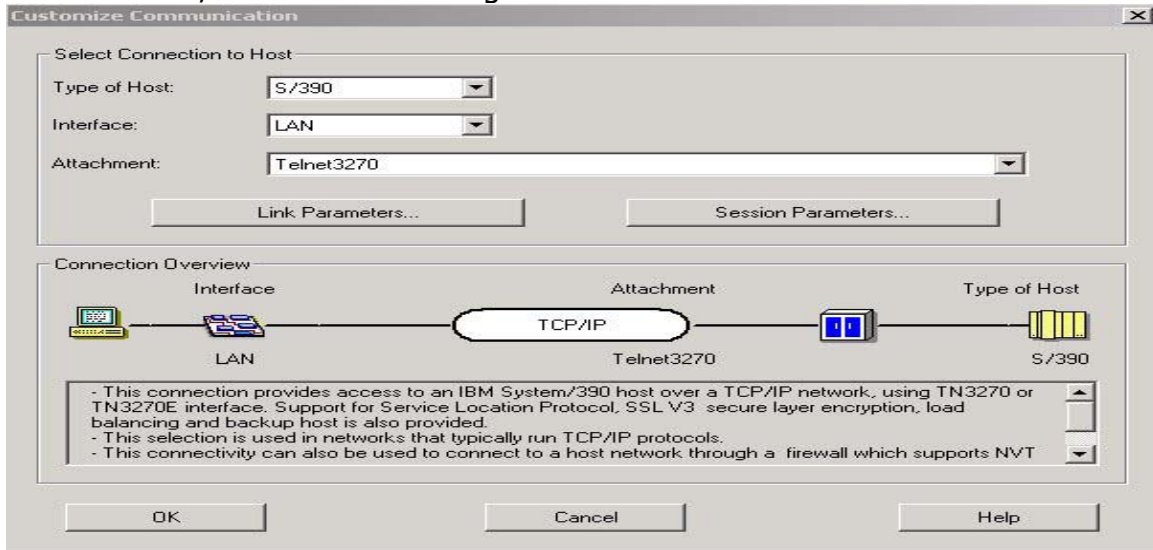
Automatically close the associated printer session with this session

Auto-reconnect

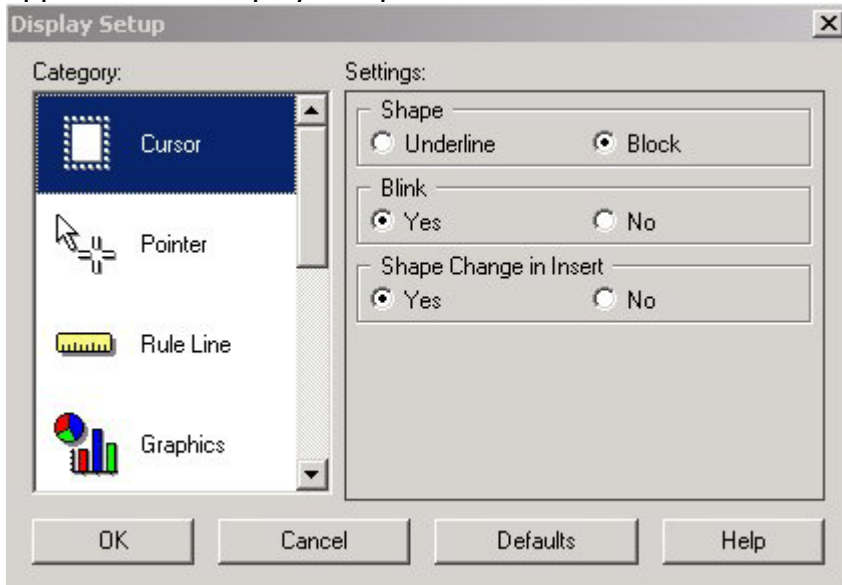
Enable Security

OK Cancel Apply Help

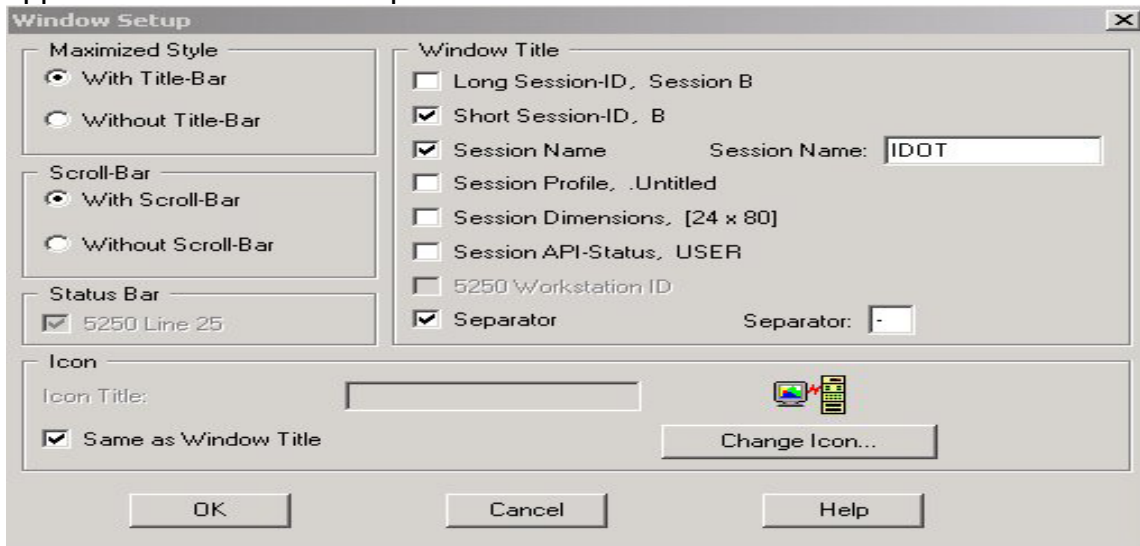
Then click OK, because we nothing else to do on this screen.



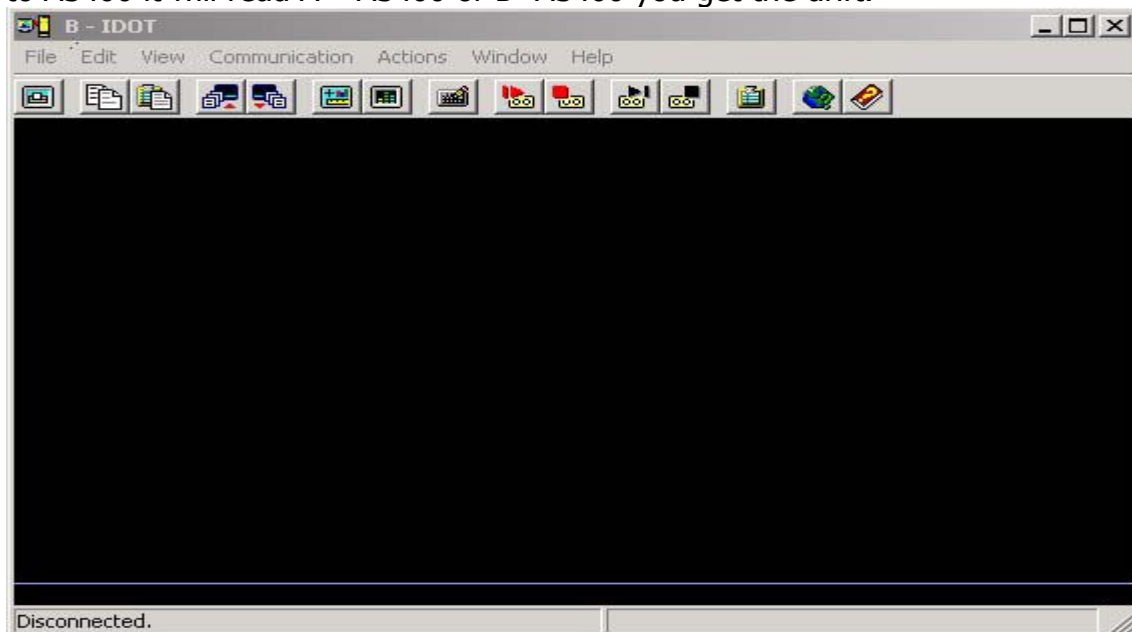
The session screen will appear again and then click on edit > preferences > appearance > display setup. Ensure selections are as follows. Click on OK.



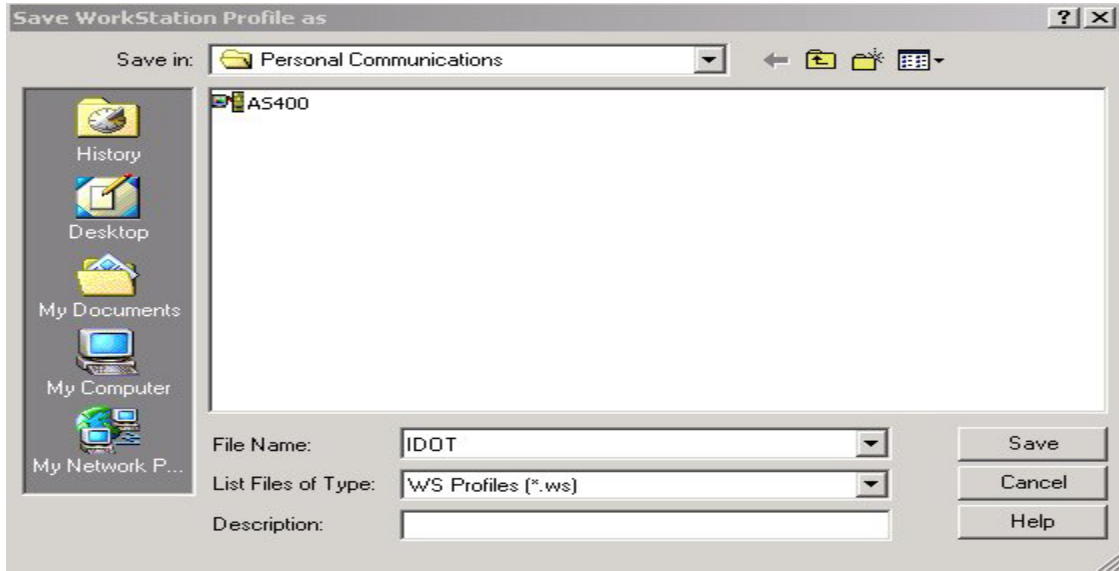
The session screen will appear again and then click on edit > preferences > appearance > window setup and make selections as follows: Click on OK.



Look at the top of this session screen and you will see why we do the windows setup. If they are connected to IDOT it will read A – IDOT or B IDOT, If connection to AS400 it will read A – AS400 or B- AS400 you get the drift.



Save this session as IDOT. Click on save.



Now you will see both an icon for IDOT and AS400. If not go back and check your configurations. Next drag and drop to create a short cut on their desk top for each session. (AS400 and IDOT).

